



MONTHLY MEMBERSHIP PROGRESS REPORT

District 4 L6

Results as of: 05/31/2018

GMT: HOWARD HUDSON

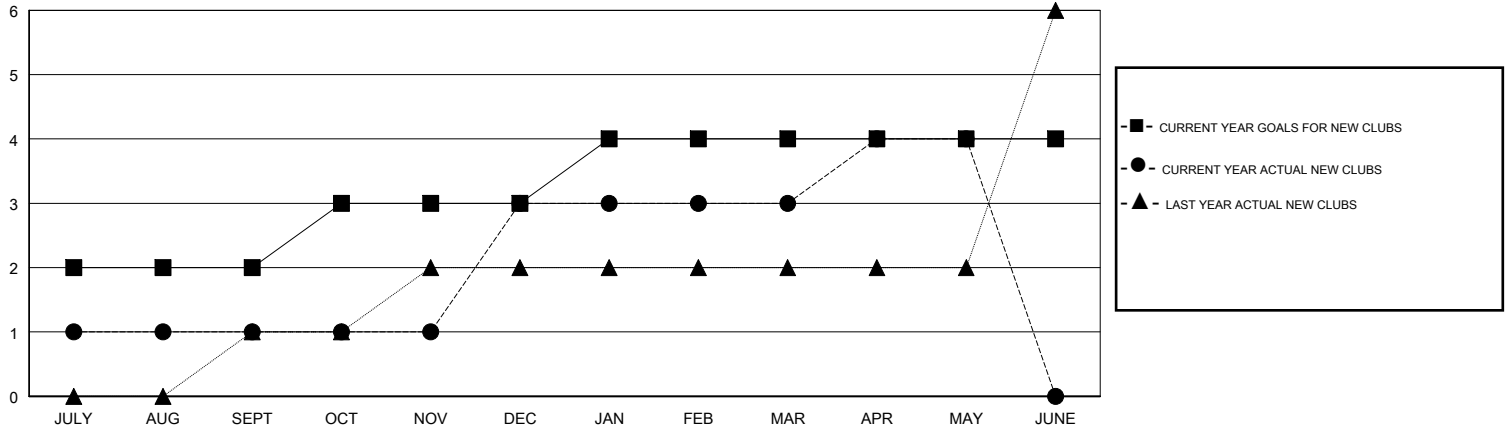
LOCATION CALIFORNIA

GMT CA

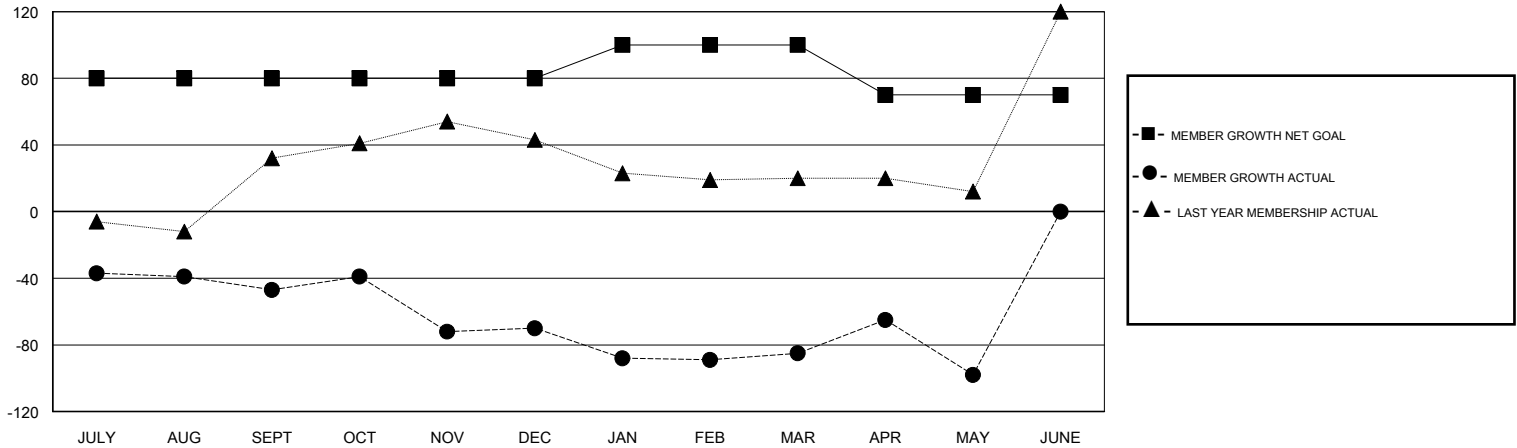
Clubs			
RESULTS FOR 2017-2018			
QUARTER	NEW CLUB GOAL	NEW CLUBS	DROPPED CLUBS
JULY/AUG/SEPT	2	1	1
OCT/NOV/DEC	1	2	4
JAN/FEB/MAR	1	0	1
APR/MAY/JUNE	0	1	0

Members			
RESULTS FOR 2017-2018			
QUARTER	MEMBER GROWTH NET GOAL	MEMBER GROWTH ACTUAL	DROPPED MEMBERS ACTUAL (including transfers)
JULY/AUG/SEPT	80	103	132
OCT/NOV/DEC	0	118	136
JAN/FEB/MAR	20	45	57
APR/MAY/JUNE	-30	54	65

GOALS AND ACTUAL NEW CLUBS CUMULATIVE



GOALS AND ACTUAL MEMBERS CUMULATIVE



DROPPED CLUBS: 6	47 CLUBS OF 71 ADDED 1 OR MORE NEW MEMBERS	<u>GENDER DISTRIBUTION</u> MALE 766 (53.45%) FEMALE 667 (46.55%) Women Percentage Fiscal Year Goal: 46%
<u>DROPPED MEMBERS</u> DECEASED 22 CLUB CANCELLED 29 OTHER 339 TOTAL 390	CLICK HERE FOR CUMULATIVE MEMBERSHIP DATA	TOTAL FAMILY UNIT MEMBERS 348 FAMILY MEMBERS PAYING HALF DUES 192